

NA 7 - 26 WET SEPARATOR



**SAFE DEVICE
SAFE FUNCTION
COMPACT AND
EFFECTIVE**

APPLICATION

VACUUM CLEANING OF
REACTIVE AND
EXPLOSIVE POWDERS IN
ADDITIVE MANUFACTURING



FEATURES AND BENEFITS



Control and Display Panel

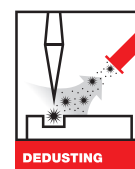
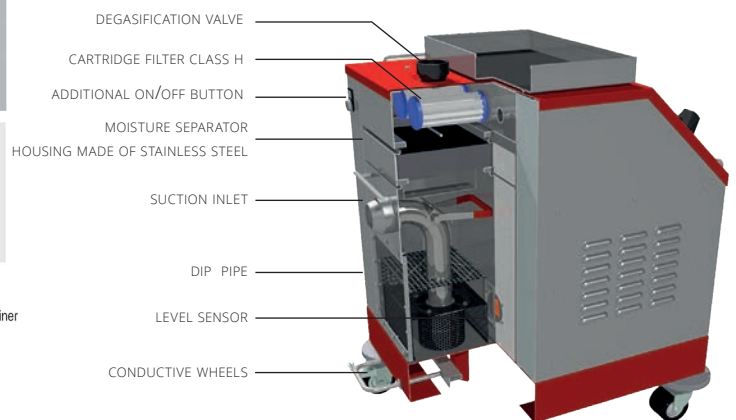


- Display differential pressure
- Display underpressure
- Control filling level
- Hour meter blower / Stand-By
- Language selection: German, English, Spanish, French
- Possibilities of error logging – optically and/or acustic

- Additional ON/OFF-Button next to liquid container
- Flat slide level as safety device

Special equipment

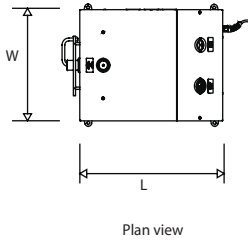
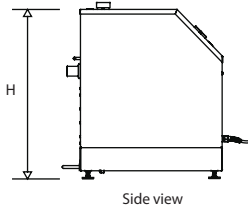
- Protective wheels on all 4 corners
- Plug of supply line selectable by customer
- Potential equalisation with integrated monitoring =
No start without plug connection



TECHNICAL SPECIFICATION



NA 7 - 26 DIMENSION: 528(w)x 819(L) x 773(H)



MODEL	NA 7 - 26
HOUSING	Stainless steel
DUTY	Intermittent
POWER	2.6 / 2.89 kW
ELECTRICAL SPEC.	1 x 230 / 240 V 50 / 60 Hz IP5X
ATEX ZONE	General
FILTER CLASS	H
FILTER TYPE	Cartridge
MAX. VACUUM	- 160 mBar
MAX. AIRFLOW	220 m ³ /h
NOISE LEVEL	68 dB (A)
MAX. CAPACITY	7 L
CONNECTION	50 mm ID
WEIGHT	98 Kg.

* This wet separator does not contain a connection cable. This must be selected according to the required voltage / frequency / country via an additional equipment.

CUSTOMIZING AND OPTIONS

- Up to 125mm diameter large wheelbase for driving on rough ground surface
- Interlocked potential equalization (Permanent control of circuit)
- Models with UL certified electrical system available
- Exhaust air with DN60mm connection to connect to customer side for 100% air exhaust
- Level Sensor for monitoring the fill level

ACCESSORIES

Accessory pack 35 mm for NA 7 - 26

includes:

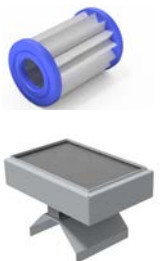
- Conductive (M) Hose PUR Black DN40 mm * 3.0m connector to vacuum side DN50 mm
- Curved Hand Pipe - 35 mm DN - Stainless Steel
- Crevice Nozzle 35mm
- Anti-static - Brush Stainless Steel body
- Suction Nozzle 15mm with anti-static plastic cap
- OPTIONAL Trolley for removing & transport of liquid tank

TYPICAL IMAGE OF ACCESSORIES



WEAR PARTS

- Cartridge filter 0.10 m² class H
- Moisture separator
- Fresh air filter 1.1m²
**recommende to change every 40 hours



RUWAC ASIA LTD.

700/295 Moo 1, AMATA CITY CHONBURI,
T. BANKAO, A. PANTHONG, CHONBURI 20160 THAILAND
TEL: +66 2 1054081 FAX: +66 38 468835

E-mail: info@ruwac-asia.com

www.ruwac-asia.com